

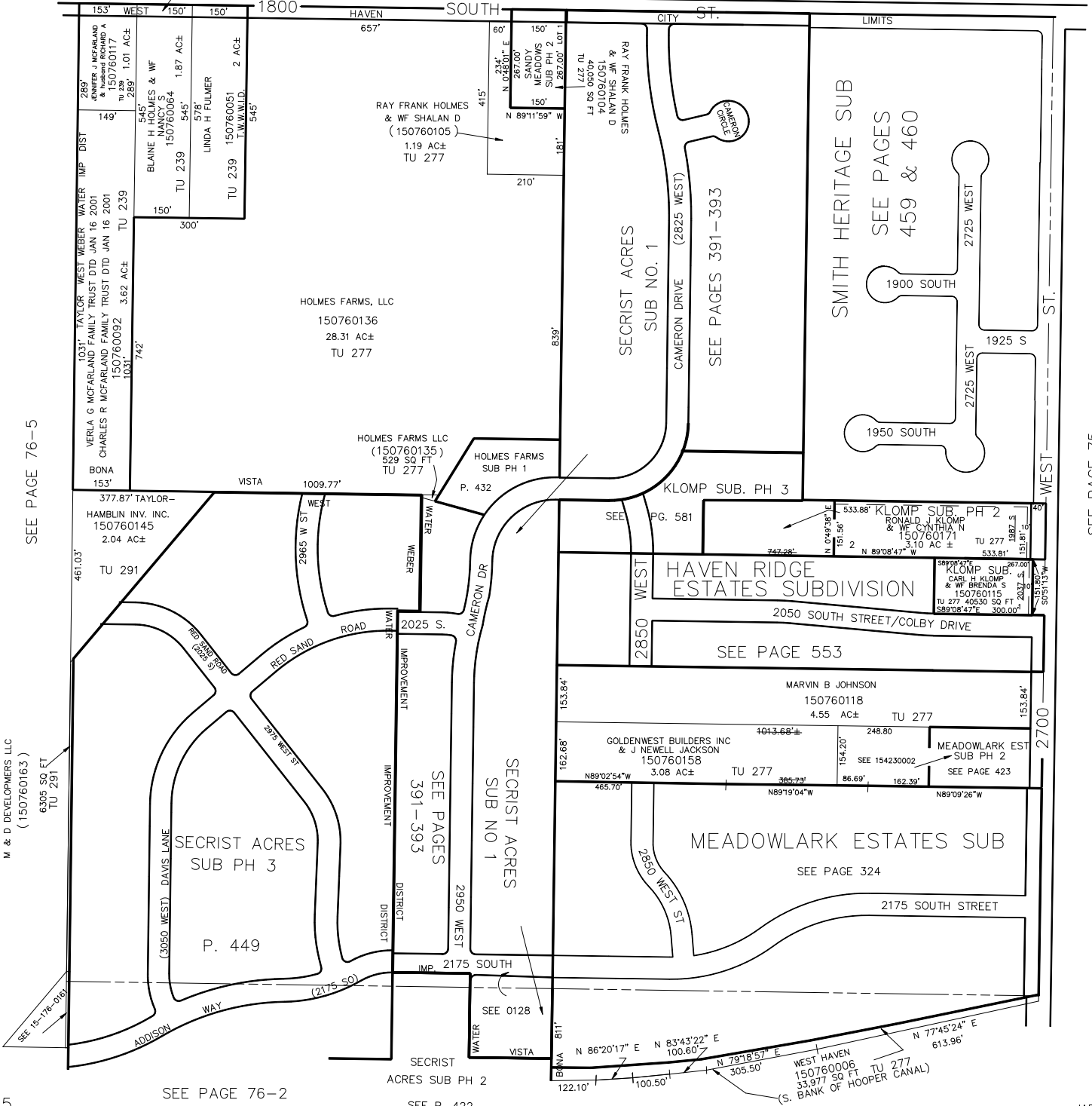
NE 1/4
SECTION 27, T.6N., R.2W., S.L.B. & M.

TAXING UNITS: 239,277,291

IN WEST HAVEN CITY SCALE 1" = 200'

SEE PAGE 60-2

WEBER COUNTY
(150760063)
TU 239



SEE PAGE 76-5

SEE PAGE 75

M & D DEVELOPERS, LLC
(150760163)
6305 SQ. FT.
TU 291

SEE PAGE 76-2

SEE P. 422